

3D Geometric Transformation based View Synthesis for Wide Angle View

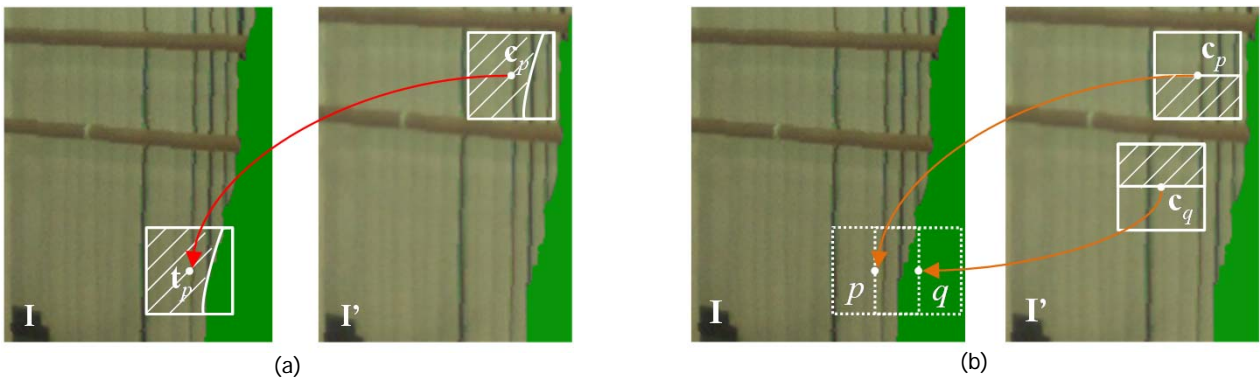
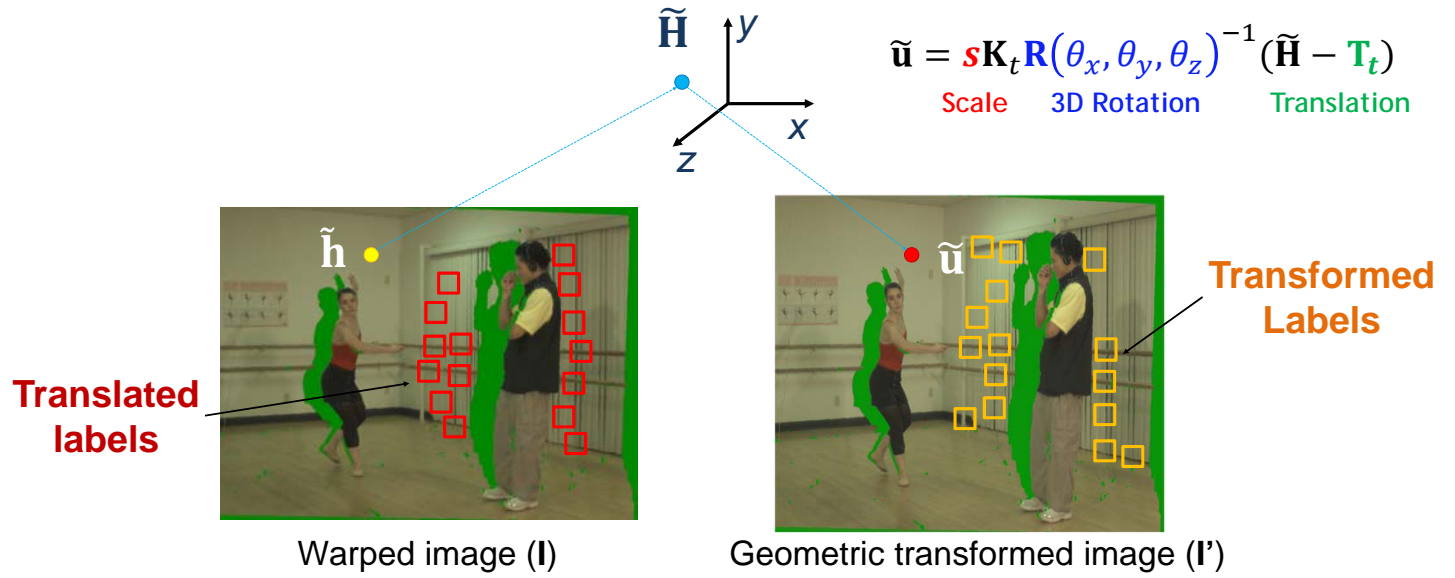
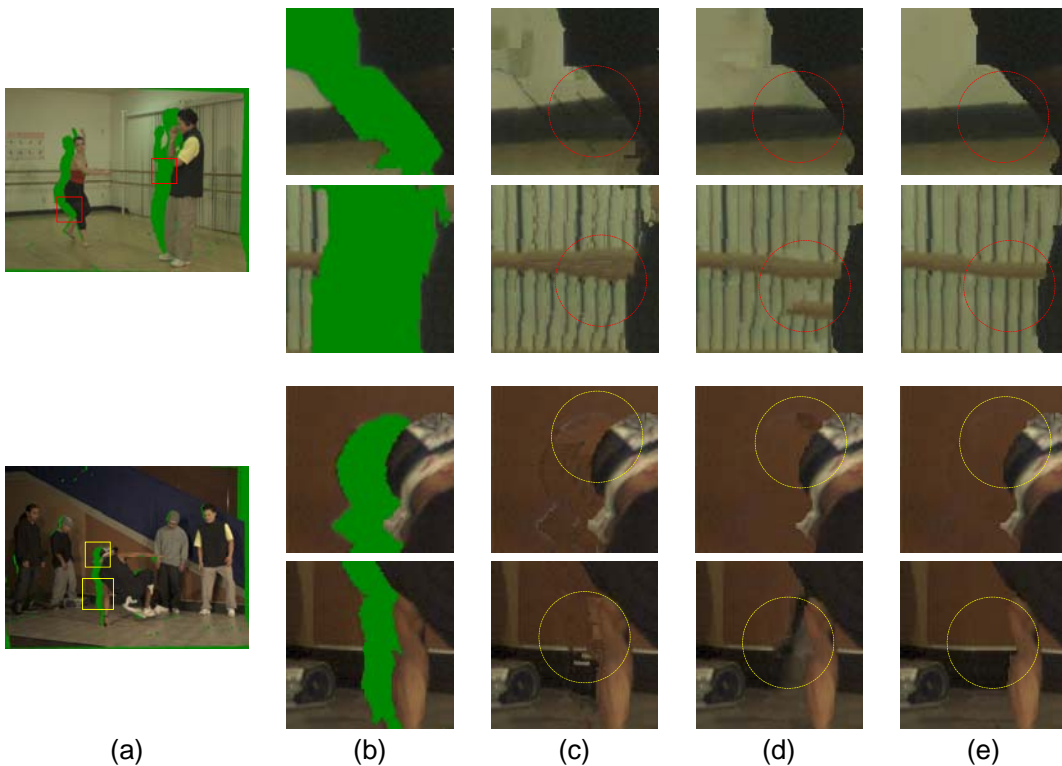


Illustration of the proposed 3D geometric transformation based view synthesis method for wide angle view.
 (a) The calculation of the data cost term. (b) The calculation of the smoothness cost term for structural consistency.



3D view synthesis results for "Ballet" and "Breakdancer".
 (a) Wide angle virtual view.
 (b) Magnified parts of (a).
 (c) Local greedy based method.
 (d) Global optimization based method.
 (e) Proposed method.